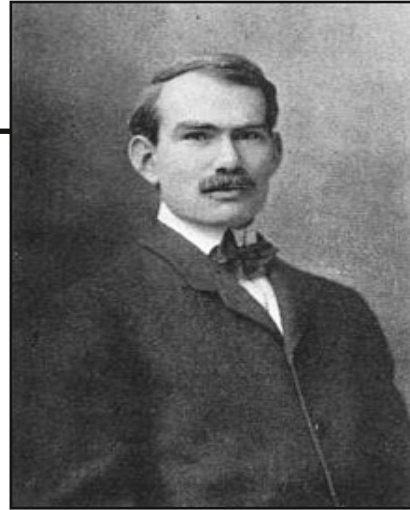


Lee de Forest



August 26, 1873 – June 30, 1961

Handwriting practice lines consisting of a solid top line, a dashed middle line, and a solid bottom line.

Multiple sets of handwriting practice lines, each consisting of a solid top line, a dashed middle line, and a solid bottom line.

The image shows a handwriting practice sheet. It features a large rectangular frame containing several sets of horizontal lines for writing. Each set consists of three lines: a solid top line, a dashed middle line, and a solid bottom line. There are two such sets in the upper portion of the page, followed by seven more sets filling the rest of the page. A smaller, empty rectangular box is attached to the top right side of the main frame, overlapping the top line of the first set of handwriting lines.

A blank lined paper template. The page features a large rectangular frame containing horizontal lines for writing. On the right side of the page, there is a smaller, empty rectangular box, likely intended for a drawing or a specific note. The lines are evenly spaced and extend across the width of the page.